

Construction Updates at Perley Health

Edition:

4

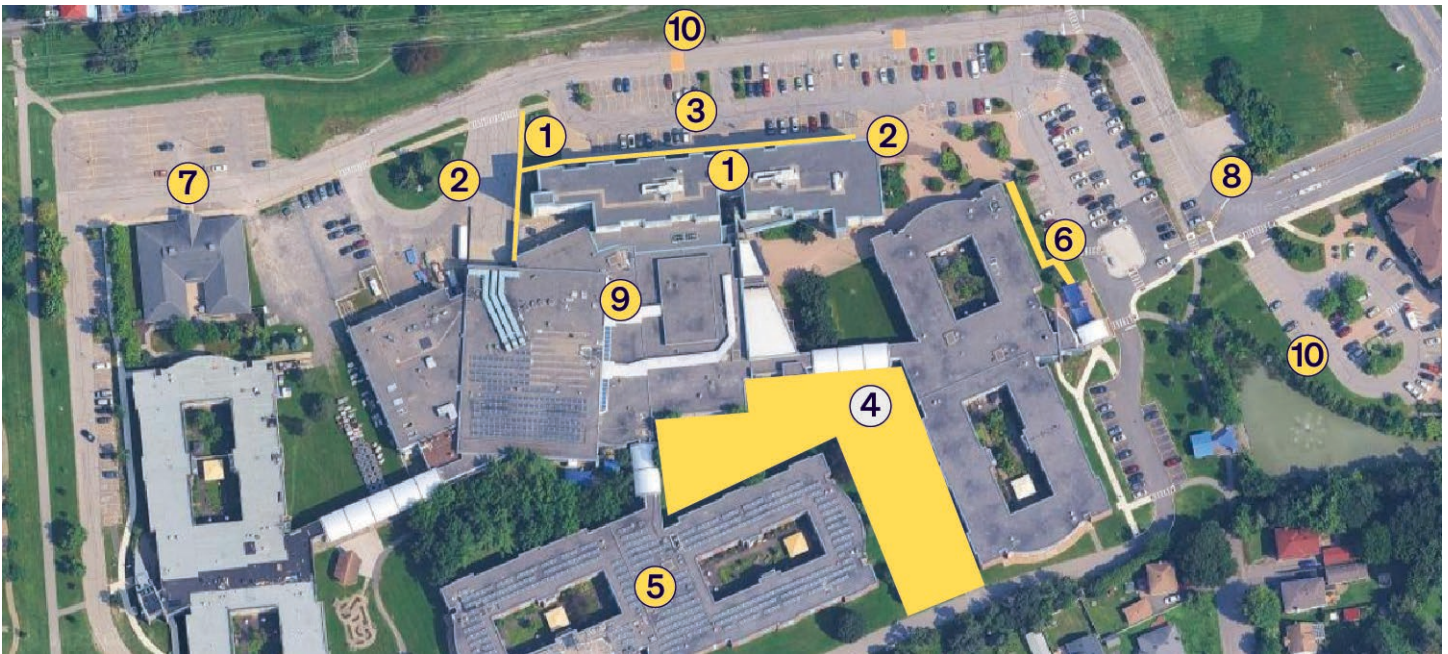
August 29, 2025

Your Safety is Our Top Priority

Your safety is paramount throughout this project. Please help us keep everyone safe by paying close attention to all signs and following all safety directions in and around construction areas.

This is the fourth edition of our regular "construction" newsletter, designed to keep you informed about work details, safety measures, and project schedules.

Construction Overview



Current Work in Progress

1. New sidewalks at 1720 Russell Road, Commissionaires Ottawa Place to the staff entrance near the loading dock.
2. Patio stones installed near the main entrance and flagpoles at Commissionaires Ottawa Place.
3. Electric Vehicle Charging Stations: Electrical work begins for the installation of four parking spaces with electric vehicle charging stations.
4. Perley Health Intergenerational Child Care, a program of Andrew Fleck Children's Services. See reverse for details.
5. Ottawa Residence re-roofing is nearly complete.

Upcoming Projects

6. New sidewalks planned for Rideau Veterans Residence.
7. Temporary sidewalk repairs at Respite House.
8. Campus map re-installation.
9. Re-roofing of Perley Centre. The work will begin in September.
10. Landscaping maintenance planned for Commissionaires Ottawa Place and 1780 Russell Road.

Important Service Disruptions

Intergenerational Child Care Update: Piling Work - Noise and Vibrations

Piling was delayed from its initial start last week. The work will begin **Monday, August 25 to Friday, September 5, 2025**, with crews performing piling work (drilling into the ground) between the hours of 7 am – 7 PM. Work in the area will likely generate significant vibration and noise, with levels potentially reaching between 100-115 decibels. The noise and vibration will decrease considerably with distance from the immediate work area, or within a building.

As of publication, the noise levels have not been as high as expected. Free hearing protection (ear plugs) can be picked up from Support Services offices on the second floor of the Perley Centre.

Arts Studio Closure Update: Studios are Open

The art studios on the second floor of the Perley Centre will remain open.

We apologize for any inconveniences over the past week around the closures and appreciate your patience as we worked to ensure the safety of staff and residents during this work.

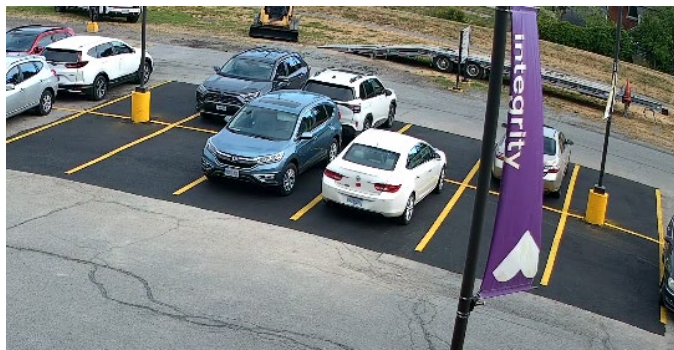
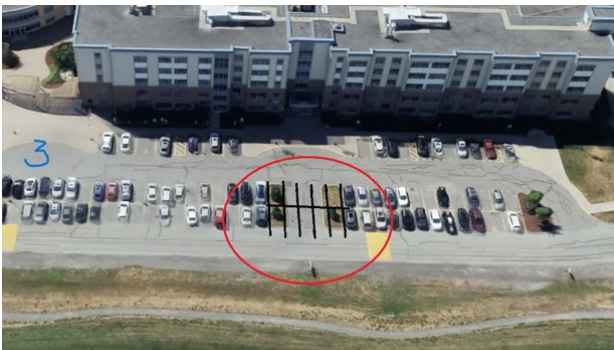
Staff Entrance Closure

The staff entrance will be closed until **Friday, September 5** to complete work on the sidewalk in that area.

1720 Russell Road Parking

On **Tuesday, August 19**, the islands, were removed and additional parking spaces have been created. (see images).

This is to accommodate ongoing repair work and the addition of new parking areas that will improve availability and flow.



For questions or concerns, please contact info@PerleyHealth.ca.

Perley Health produces a construction newsletter every two weeks, or when news must be promptly shared. This information is available in print throughout the Perley community and posted to the Perley Health website (PerleyHealth.ca/public-announcement).